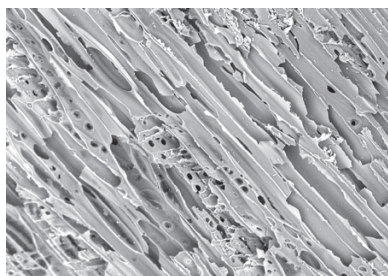


CHARCOAL POWDER

Absorbing Powder



Charcoal Powder has become a popular ingredient for masks, moisturizers and cleansing formulas thanks to its large surface area and absorption properties. It can absorb impurities, odors, moisture, oils and sebum on the skin and hair.



SEM Picture:
CHARCOAL POWDER
Ultra-Structure

Kobo is introducing a new **CHARCOAL POWDER**, a natural and highly porous powder made from Pine tree wood. It is a fine black powder (20 μm), with a narrow particle size distribution which doesn't stain and is easy to incorporate into formulas without producing a grainy aspect. The typical use level is 1-10% and preferred applications are cleansing products including masks, soaps, shampoos, and body care.

Trade Name	INCI Name	Particle Size (μm)	Oil Abs* (g/100g)	Density (g/in ³)
CHARCOAL POWDER	Charcoal Powder	20	170	2.6



KFL-133B

Pore Reducing, Peel-Off Face Mask

Part 1

- Deionized Water: *Water* 58.50%
- Trisodium EDTA - Protameen: *Trisodium EDTA* 0.10%

Part 2

- Selvol[™] Ultalux FF - Sekisui Plastics Co., Ltd: *Polyvinyl Alcohol* 11.00%

Part 3

- Flexan[®] II - Akzo Nobel: *Sodium Polystyrene Sulfonate* 2.50%

Part 4

- Glycerin U.S.P. Natural - Univar: *Glycerin* 2.50%
- Aloe Vera Gel - Jeen International: *Aloe Vera* 4.00%
- Butylene Glycol - Ruger Chemical: *Butylene Glycol* 2.00%

Part 5

- Lipo[®] Polyglycol 400 - Vantage: *PEG-8* 2.00%
- Phenoxetol[®] - Ashland: *Phenoxyethanol* 0.90%

Part 6

- CHARCOAL POWDER** - Adsorb/Kobo Products: *Charcoal Powder* 1.50%
- SPC/BLACK NF-I2 - Kobo Products: *Iron Oxides (CI 77499) (And) Ethylene/Methacrylate Copolymer (And) Isopropyl Titanium Triisostearate* 1.00%

Part 7

- Ethanol 24,511-9 - Aldrich Chemical Co.: *Ethyl Alcohol* 5.00%
- Gs-SA2B - Kobo Products: *Butylene Glycol (And) Water (And) Salicylic Acid (And) Palmitoyl Hydroxypropyltrimonium Amylopectin/Glycerin Crosspolymer (And) Phenoxyethanol (And) Parabens (And) Hydrogenated Lecithin* 3.00%

Manufacturing Procedure

- Record beaker weight.
- Combine Part 1 and begin prop mixing.
- Slowly add Part 2 and mix for -5 mins.
- Heat batch to 85°C and continue mixing for 20 mins.
- Slowly add Part 3 while maintaining heat.
- Begin to cool and add back water lost during heating.
- Add Part 4, followed by Part 5 while cooling.
- Add Part 6 and mix until dispersed.
- Add Part 7 when batch reaches room temperature.

Description

This peel-off mask features **CHARCOAL POWDER**, which contributes absorbing properties. Kobo's SPC/BLACK NF-I2 adds to the deep black color of the mask, while improving application and spreadability. Gs-SA2B contains Salicylic Acid, an active ingredient known to effectively clean pores by chemically exfoliating away dead skin cells.

Note: Apply to face. Let dry for 10-15 mins before peeling.

KOBO

USA - New Jersey
+1 (908) 757-0033

FRANCE - Labege
+33 (0)5-62-88-77-40

BRASIL - São Paulo
+55 (11) 5062-0634