

Fibers

Europe Program



Kobo offers a variety of natural and synthetic fibers in different lengths, thicknesses and shapes. They can be used to promote texturizing, soft focus, lengthening and volumizing effects in finished products.

Nylon Fibers

Synthetic **Nylon** fibers are commonly used in mascara and eyebrow products for lengthening and volumizing effects.

Polypropylene Fibers

Synthetic fibers made from **Polypropylene** can be used for lengthening and volumizing effects in mascara and eyebrow products or to achieve a soft focus effect in powders, color and skin care emulsions, and lipsticks.

Natural Origin Fibers

CELL-U-LASH™ fibers are made of **cellulose**, a natural polymer, and vary in length from 20µm to 110µm; they are hydrophilic and disperse easily in the initial water phase of an emulsion. These fibers are an excellent choice for finished products containing natural ingredients.

Colored Nylon Fibers

Colored Nylon Fibers containing Black Iron Oxide are available. They are especially effective in promoting lengthening properties in Mascara and Eyebrow products while contributing to and enhancing the overall color effect of the product.

Trade Name	INCI Name	Length	Diameter	Shape	Color	Notes
Nylon						
KNY-3D	Nylon-66 (And) Titanium Dioxide	1.2mm	3 Denier	Fiber of Uniform Length	White	Synthetic
HEART FIBER 15T-1MM	Nylon-6 (And) Silica	1mm	13.5 Denier	Unique "Heart" Shape; Hollow	White	Synthetic
HEART FIBER 15T-2MM		2mm				
N-6 ARCH 3.3T1	Nylon-6	0.8-1.1 mm	3.3 Decitex	Fiber; Triangular with Round Edge Cross Section	White	Synthetic; Volumizing, Long Lash and Curl
N-6 ARCH 3.3T2		1.6-2.2 mm				
Polypropylene						
PP FIBER 6D05	Polypropylene (And) Silica	0.5mm	5.6 Denier	Short Fibers	White	Synthetic
PP FIBER 6D2		2mm				
Natural Origin						
CELL-U-LASH™ 40	Cellulose	20-25µm	1-2µm	Conventional Fiber Strands	White	Natural; Hydrophilic; Volumizing; Soft Focus
CELL-U-LASH™ 90		60-75µm				Natural; Hydrophilic; Lengthening
CELL-U-LASH™ 150		80-110µm				
RAYON FIBER 3.3T-0.8MM(S)	Rayon (And) Silica	0.64-0.88 mm	3.3 Decitex	Unique "Cloud" Shape	White	Volumizing and Lengthening
Colored Nylon						
SPLASH FIBER II 7T-1MM	Nylon-6 (And) Iron Oxides (CI 77499) (And) Silica	1mm	6.3 Denier	Unique "Flower" Shape	Black	Synthetic
SPLASH FIBER II 7T-2MM		2mm				



SEM Image:
KNY-3D



SEM Image:
HEART FIBER 15T



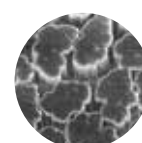
SEM Image:
N-6 ARCH 3.3T2



SEM Image:
CELL-U-LASH™ 150



SEM Image:
SPLASH FIBER II



SEM Image:
RAYON FIBER
3.3T-0.8MM(S)

KOBO

USA - New Jersey
+1 (908) 757-0033

BRASIL - São Paulo
+55 (11) 5062-0634

UK - Abingdon
+44 7913 636 673

FRANCE - Labege
+33 (0)5-62-88-77-40



KMU-023B

Natural Eyebrow Filler

Part 1

● MICA S-ASG3 - Kobo Products: Mica (And) Stearoyl Glutamic Acid	15.65%
● ZNO-C-ASG3J - Kobo Products: Zinc Oxide (And) Stearoyl Glutamic Acid	15.65%
● BBO-ASG3 - Kobo Products: Iron Oxides (CI 77499) (And) Stearoyl Glutamic Acid	9.04%
● MSS-500W - Kobo Products: Silica	7.87%
● BRO-ASG3 - Kobo Products: Iron Oxides (CI 77491) (And) Stearoyl Glutamic Acid	5.50%
● BYO-ASG3 - Kobo Products: Iron Oxides (CI 77492) (And) Stearoyl Glutamic Acid	3.14%

Part 2

● Protachem™ CTG - Protameen: Caprylic/Capric Triglyceride	18.37%
● Cetiol® CC - Cognis Corp.: Dicaprylyl Carbonate	7.60%
● SunBoost ATB Natural - Kobo Products: Argania Spinosa Kernel Oil (And) Tocopheryl Acetate (And) Bisabolol	4.75%
● COSMOL™ 43V - Ikeda: Polyglyceryl-2 Triisostearate	3.63%
● Plandool™-LG1 - Nippon/Kobo Products: Phytosteryl/Behenyl/Octyldodecyl Lauroyl Glutamate	1.00%
● Carnauba Wax SP 63P - Strahl & Pitsch: Copernicia Cerifera (Carnauba) Wax	0.40%

Part 3

● Vegelight™ 1214 LC - Grant Industries, Inc.: Coconut Alkanes (And) Coco-Caprylate/Caprate	5.00%
---	-------

● Polyaldo™ 10-1-0 K FG - Lonza: Polyglyceryl-10 Oleate	1.00%
● Lexgard® Natural - Inolex Chemical Company: Glyceryl Caprylate (And) Glyceryl Undecylenate	0.40%

Part 4

● CELL-U-LASH™ 40 - Kobo Products: Cellulose	1.00%
--	-------

Manufacturing Procedure

1. Blend Part 1.
2. Heat Part 2 to 80 °C under propeller agitation.
3. Slowly add Part 1 to Part 2 under prop mixer and start to gradually cool.
4. Slowly add Parts 3 and 4, respectively, to Parts 1 and 2 at 45 °C.

Description

This natural eyebrow filler features Kobo's ASG treated fillers and pigments which help to impart color, payoff and adhesion to brows. Kobo's silica microsphere, MSS-500W, provides payoff and glide during application. SunBoost ATB Natural is a proprietary ratio of anti-oxidant, anti-irritant and anti-inflammatory agents that nourishes brows. Kobo's cellulose fiber, CELL-U-LASH™ 40, fills in brows making them appear more even and covers sparse areas. Plandool™-LG1 improves malleability of the wax complex which increases bulk transfer to the brow.



KMA-074A

All-In-One Conventional Mascara

Part 1

● Paraffin Wax 4344 - Strahl & Pitsch: Paraffin	7.00%
● Carnauba Wax SP 63P - Strahl & Pitsch: Copernicia Cerifera (Carnauba) Wax	3.00%
● Dermofat 4919 - Alzo Chemical: Stearic Acid	3.00%
● Lipo® GMS-450 - Vantage: Glyceryl Stearate	3.00%
● KOBOGUARD® HRPC - Kobo Products: Hydrogenated Polycyclopentadiene (And) Polyethylene (And) Copernicia Cerifera (Carnauba) Wax (And) Tocopherol	2.00%
● Ganex® V-216 - Ashland: VP/Hexadecane Copolymer	1.50%
● Apifil CG - Gattefosse: PEG-8 Beeswax	1.00%
● Permethyl® 104A - Presperse: Polyisobutene	1.00%

Part 2

● Deionized Water - Water	15.00%
● BLACK NF - Kobo Products: Iron Oxides (CI 77499)	10.00%
● PVP K-30 - Ashland: Poly(Vinyl Pyrrolidone)	0.80%
● Lexgard® O - Inolex Chemical Company: Caprylyl Glycol	0.20%
● Prisorine™ 3515 - Croda: Isostearyl Alcohol	0.10%
● S-6W-6 - Shin Etsu: Simethicone	0.05%

Part 3

● Deionized Water - Water	29.65%
● Butylene Glycol - Ruger Chemical: Butylene Glycol	2.00%
● KAOLIN - Imerys: Kaolin	2.00%
● KoboMica S-25 - Kobo Products: Mica	1.50%
● MSS-500W - Kobo Products: Silica	1.00%
● AMP Ultra® PC 2000 - Angus Chemical Company: 2-Amonoisobutanol	0.50%
● Natrosol® 250 HHR CS - Ashland: Hydroxyethylcellulose	0.30%
● Keltrol® CG - CP Kelco: Xathan Gum	0.20%
● Trisodium EDTA - Spectrum Chemical: Trisodium EDTA	0.10%

Part 4

● DAITOSOL 5000AD - Daito/Kobo Products: Acrylates Copolymer (And) Water	14.00%
● HEART FIBER 15T-1MM - Nikko/Kobo Products: Nylon-6 (And) Silica	0.15%
● SPLASH FIBER II 7T-2MM - Nikko/Kobo Products: Nylon-6 (And) Iron Oxides (CI 77499) (And) Silica	0.15%

Part 5

● Euxyl® PE 9010 - Schulke & Mayr: Phenoxyethanol (And) Ethylhexylglycerin	0.80%
--	-------

Manufacturing Procedure

Oil Phase:

1. Combine Part 1 in side beaker. Heat to 85-90 °C with slow agitation with spatula.

Grind Phase:

2. Add water to beaker. Prop mix & heat to 60 °C.
3. Add PVP, followed by Isostearic Alcohol, Caprylyl Glycol, & Simethicone.
4. Sprinkle Black NF into the vortex. Mix until pigment is wet out.
5. Transfer to homogenizer for 30 minutes.

Water Phase: (main beaker)

6. Record tare weight of main beaker & sweep.
7. Add water to the main beaker. Begin heating to 60 °C with prop mixing.
8. Add Trisodium EDTA.
9. Pre-mix Butylene Glycol, Natrosol, & Xanthan Gum.
10. Add grind phase.
11. Heat to 85 °C.
12. Add AMP Ultra to batch. Then sprinkle in MSS-500W, Kaolin, & KoboMica S-25.
13. Add Oil phase into water phase, maintain mixing & temperature around 85 °C for 15 mins.
14. Begin to air cool.
15. Change to sweep when the bulk becomes thicker.
16. Pre-mix film former with fibers and add to batch at 45 °C.
17. Add Euxyl PE 9010.
18. Mix together for 5 minutes & QS missing weight with H2O.
29. Cool & mix until bulk reaches 28 °C.

Description

This all-in-one conventional mascara features both HEART FIBER 15T-1MM and SPLASH FIBER II 7T-2MM. The combination of the heart and black star shape fibers gives the lashes both length and volume. KOBOGUARD® HRPC provides a water-resistant film and allows the mascara to be buildable upon application. DAITOSOL 5000AD also contributes to water-resistant properties. BLACK NF provides deep black color to the mascara. The combination of KoboMica S-25 and MSS-500W provides thickness and body while contributing to volume on the lashes.

KOBO

Fibers

www.koboproducts.com