

Fibers

Kobo offers a variety of natural and synthetic fibers in different lengths, thicknesses and shapes. They can be used to promote texturizing, soft focus, lengthening and volumizing effects in finished products.

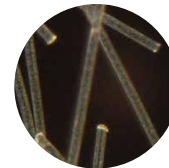


Nylon Fibers

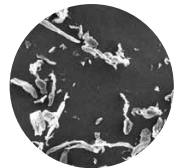
Synthetic **Nylon** fibers are commonly used in mascara and eyebrow products for lengthening and volumizing effects.

Natural Fibers

CELL-U-LASH™ fibers are made of **cellulose**, a natural polymer, and vary in length from 20µm to 110µm; they are hydrophilic and disperse easily in the initial water phase of an emulsion. These fibers are an excellent choice for finished products containing natural ingredients.



SEM Image:
KNY-3D



SEM Image:
CELL-U-LASH™ 150

Trade Name	INCI Name	Length	Diameter	Shape	Color	Notes
KNY-3D	Nylon-66 (And) Titanium Dioxide	1.2mm	3 Denier	Fiber of uniform length	White	Synthetic
CELL-U-LASH™ 40	Cellulose	20-25µm	1-2µm	Conventional fiber strands	White	Natural; Hydrophilic; Volumizing; Soft Focus
CELL-U-LASH™ 90		60-75µm				Natural; Hydrophilic; Lengthening
CELL-U-LASH™ 150		80-110µm				



KMU-023B

Natural Eyebrow Filler

Part 1

- MICA S-ASG3 - Kobo Products: Mica (And) Stearoyl Glutamic Acid 15.65%
- ZNO-C-ASG3J - Kobo Products: Zinc Oxide (And) Stearoyl Glutamic Acid 15.65%
- BBO-ASG3 - Kobo Products: Iron Oxides (CI 77499) (And) Stearoyl Glutamic Acid 9.04%
- MSS-500W - Kobo Products: Silica 7.87%
- BRO-ASG3 - Kobo Products: Iron Oxides (CI 77491) (And) Stearoyl Glutamic Acid 5.50%
- BYO-ASG3 - Kobo Products: Iron Oxides (CI 77492) (And) Stearoyl Glutamic Acid 3.14%

Part 2

- Protachem™ CTG - Protameen: Caprylic/Capric Triglyceride 18.37%
- Cetiol® CC - Cognis Corp.: Dicaprylyl Carbonate 7.60%
- SunBoost ATB Natural - Kobo Products: Argania Spinosa Kernel Oil (And) Tocopheryl Acetate (And) Bisabolol 4.75%
- COSMOL™ 43V - Ikeda: Polyglyceryl-2 Triisostearate 3.63%
- Plandool™-LG1 - Nippon/Kobo Products: Phytosteryl/Behenyl/Octyldodecyl Lauroyl Glutamate 1.00%
- Carnauba Wax SP 63P - Strahl & Pitsch: Copernicia Cerifera (Carnauba) Wax 0.40%

Part 3

- Vegelight™ 1214 LC - Grant Industries, Inc.: Coconut Alkanes (And) Coco-Caprylate/Caprate 5.00%
- Polyaldo™ 10-1-0 K FG - Lonza: Polyglyceryl-10 Oleate 1.00%
- Lexgard® Natural - Inolex Chemical Company: Glyceryl Caprylate (And) Glyceryl Undecylenate 0.40%

Part 4

- CELL-U-LASH™ 40 - Kobo Products: Cellulose 1.00%

Manufacturing Procedure

1. Blend Part 1.
2. Heat Part 2 to 80 °C under propeller agitation.
3. Slowly add Part 1 to Part 2 under prop mixer and start to gradually cool.
4. Slowly add Parts 3 and 4, respectively, to Parts 1 and 2 at 45 °C.

Description

This natural eyebrow filler features Kobo's ASG treated fillers and pigments which help to impart color, payoff and adhesion to brows. Kobo's silica microsphere, MSS-500W, provides payoff and glide during application. SunBoost ATB Natural is a proprietary ratio of anti-oxidant, anti-irritant and anti-inflammatory agents that nourishes brows. Kobo's cellulose fiber, CELL-U-LASH™ 40, fills in brows making them appear more even and covers sparse areas. Plandool™-LG1 improves malleability of the wax complex which increases bulk transfer to the brow.

KOBO

USA - New Jersey
+1 (908) 757-0033

BRASIL - São Paulo
+55 (11) 5062-0634

UK - Abingdon
+44 7913 636 673

FRANCE - Labege
+33 (0)5-62-88-77-40



KMA-078

Global Conventional Mascara

Part 1

- Paraffin Wax 4344 - Strahl & Pitsch: *Paraffin* 7.50%
- Lipo® GMS-450 - Vantage: *Glyceryl Stearate* 4.00%
- Carnauba Wax SP 63 - Strahl & Pitsch:
Copernicia Cerifera (Carnauba) Wax 3.00%
- Dermofat 4919 - Alzo Chemical: *Stearic Acid* 3.00%
- **KOBOGUARD® HRPC** - Kobo Products:
Hydrogenated Polycyclopentadiene (And) Polyethylene (And) Copernicia Cerifera (Carnauba) Wax (Copernicia Cerifera Wax) (And) Tocopherol 2.00%
- Ganex® V-216 - Ashland: *VP/Hexadecane Copolymer* 1.50%
- Apifil CG - Gattefosse: *PEG-8 Beeswax* 1.00%
- Permethyl® 104A - Presperse: *Polyisobutene* 1.00%

Part 2

- Deionized Water - *Water* 15.00%
- **BLACK NF** - Kobo Products: *Iron Oxides (CI 77499)* 10.00%
- PVP K-30 - Ashland: *Poly(Vinyl Pyrrolidone)* 0.80%
- Lexgard® O - Inolex: *Caprylyl Glycol* 0.20%
- Prisorine™ 3515 - Croda: *Isostearyl Alcohol* 0.10%
- S-6W-6 - Shin Etsu: *Simethicone* 0.05%

Part 3

- Deionized Water - *Water* 25.95%
- Butylene Glycol - Ruger Chemical: *Butylene Glycol* 2.00%
- KAOLIN - Imerys: *Kaolin* 2.00%
- **KoboMica S-25** - Kobo Products: *Mica* 2.00%
- **MSS-500W** - Kobo Products: *Silica* 2.00%
- AMP ULTRA® PC 2000 - Angus Chemical Company:
Aminomethyl Propanol 0.50%
- Natrosol® 250 HHR CS - Ashland: *Hydroxyethylcellulose* 0.30%
- Keltrol® CG - CP Kelco: *Xanthan Gum* 0.20%
- Trisodium EDTA - Spectrum Chemical: *Trisodium EDTA* 0.10%

Part 4

- **KOBOGUARD® 50AMP** - Kobo Products:
Acrylates/Ethylhexyl Acrylate Copolymer (And) Water (And) Aminomethyl Propanol 14.50%
- **KNY-3D** - Kobo Products:
Nylon-66 (And) Titanium Dioxide 0.50%

Part 5

- Euxyl® PE 9010 - Schulke & Mayr:
Phenoxyethanol (And) Ethylhexylglycerin 0.80%

Manufacturing Procedure

Oil Phase:

1. Combine Part 1 in side beaker. Heat to 85-90°C with slow agitation with spatula.

Grind Phase:

2. Add water to beaker. Prop mix and heat to 60°C.
3. Add PVP, followed by Isostearic Alcohol, Caprylyl Glycol, and Simethicone.
4. Sprinkle Black NF into the vortex. Mix until pigment is wet out.
5. Transfer to homogenizer for 30 minutes.

Water Phase: (main beaker)

6. Record tare weight of main beaker and sweep.
7. Add Water to the main beaker. Begin heating to 60°C with prop mixing.
8. Add Trisodium EDTA.
9. Pre-mix Butylene Glycol, Natrosol® and Xanthan Gum.
10. Add grind phase.
11. Heat to 85°C.
12. Add AMP Ultra to batch. Then sprinkle in MSS-500W, Kaolin and KoboMica S-25.
13. Add Oil phase into water phase, maintain mixing and temperature around 85°C for 15 mins.
14. Begin to air cool.
15. Change to sweep when the bulk becomes thicker.
16. Pre-mix film former with KNY-3D and add to batch at 45°C.
17. Add Euxyl® PE 9010.
18. Mix together for 5 minutes and QS missing weight with Water.
19. Cool and mix until bulk reaches 28°C.

Description

This conventional mascara features Kobo's **KNY-3D** fibers for lengthening and volumizing effects when applied to the lashes. **KOBOGUARD® HRPC** provides a plasticizing effect to the wax complex, and allows the mascara to be buildable upon application. **KOBOGUARD® 50AMP** contributes to water-resistant properties. **BLACK NF** provides deep black color to the mascara. The combination of KoboMica S-25 and MSS-500W provides thickness and body, while contributing to volume on the lashes.