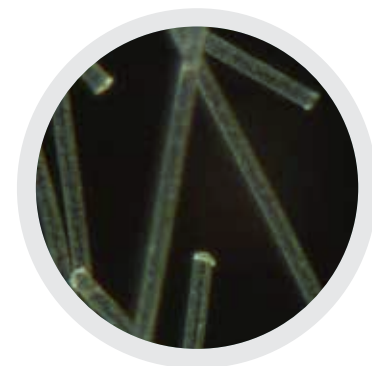


Fibers

USA & Canada Program



Kobo offers a variety of natural and synthetic fibers in different lengths, thicknesses and shapes. They can be used to promote texturizing, soft focus, lengthening and volumizing effects in finished products.

Natural Fibers

CELL-U-LASH™ fibers are made of **cellulose**, a natural polymer, and vary in length from 20µm to 110µm; they are hydrophilic and disperse easily in the initial water phase of an emulsion.

These fibers are an excellent choice for finished products containing natural ingredients.

Nylon Fibers

Synthetic **Nylon** fibers are commonly used in mascara and eyebrow products for lengthening and volumizing effects.

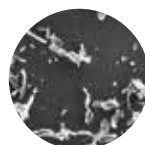
Trade Name	INCI Name	Length	Diameter	Shape	Color	Notes
CELL-U-LASH™ 40	Cellulose	20-25µm	1-2µm	Conventional fiber strands	White	Natural; Hydrophilic; Volumizing; Soft Focus
CELL-U-LASH™ 90		60-75µm				Natural; Hydrophilic; Lengthening
CELL-U-LASH™ 150		80-110µm				
SILK COTTON PW+++	Cellulose	Diameter: 8.8µm Thickness: 1-2µm		Fine powder Flake shaped	White to Yellow	Natural; Light/bulky; high oil absorption; of the silk cotton tree
MST-6 SILK COTTON PW	Cellulose (And) Magnesium Stearate					Natural; Light/bulky; water repellent; of the silk cotton tree
New ECOFIBER 10D-2T	Polylactic Acid	2mm	10 Denier	Triangular Cross Section	Colorless to White	Biodegradable; corn origin; volumizing
NYLON CUT FIBER 6D	Nylon-66 (And) Titanium Dioxide (And) Silica	2mm	6 Denier	Fiber of uniform length	White	Synthetic
NYLON-66 FIBER 20D	Nylon-66 (And) Titanium Dioxide		20 Denier	Fibrous powder of uniform length	White to Yellow	
KNY-3D		1.2mm	3 Denier	Fiber of uniform length	White	
New HEART FIBER 15T-1MM	Nylon-6 (And) Silica	1mm	13.5 Denier	Unique "heart" shape; Hollow	White	Synthetic
New HEART FIBER 15T-2MM		2mm				
New N-6 ARCH 3.3T0.3	Nylon-6	0.24-0.33 mm	3.3 Decitex	Fiber; Triangular with round edge cross section	White	Synthetic; Volumizing, long lash and curl
New N-6 ARCH 3.3T1		0.8-1.1 mm				
New N-6 ARCH 3.3T2		1.6-2.2 mm				



+++ Raw material approved by Ecocert in accordance with the Ecocert Standard



SEM Image: KNY-3D



SEM Image: CELL-U-LASH™ 150



SEM Image: SILK COTTON PW



SEM Image: HEART FIBER 15T



SEM Image: ECOFIBER 10D-2T

KOBO

USA - New Jersey
+1 (908) 757-0033

FRANCE - Labege
+33 (0)5-62-88-77-40

BRASIL - São Paulo
+55 (11) 5062-0634

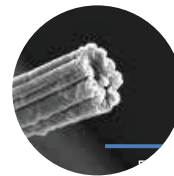
Colored Nylon and Rayon Fibers

Colored Nylon and **Rayon** Fibers containing Carbon Black, Black Iron Oxide or Brown Iron Oxide are available. They are especially effective in promoting lengthening properties in Mascara and Eyebrow products while contributing to and enhancing the overall color effect of the product.

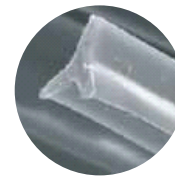
Polypropylene Fibers

Synthetic fibers made from **Polypropylene** can be used for lengthening and volumizing effects in mascara and eyebrow products or to achieve a soft focus effect in powders, color and skin care emulsions, and lipsticks.

Trade Name	INCI Name	Length	Diameter	Shape	Color	Notes
SPLASH FIBER II 7T-1MM	Nylon-6 (And) Iron Oxides (CI 77499) (And) Silica	1mm	6.3 Denier	Unique "flower" shape	Black	Synthetic
SPLASH FIBER II 7T-2MM		2mm				
NFCB-10D-2T	Nylon-6 (And) Silica (And) Black 2	2mm	10 Denier	Short Cut Form	Black	Synthetic; FDA certified Carbon Black; For shiny effect
NFCB-10D-2R				Short fiber; Round cross section		
NFCB-10D-4R	Nylon-6 (And) Black 2 (And) Silica	4mm	17 Denier	Short fiber; Triangular cross section	Black	Synthetic; FDA certified Carbon Black
NFCB-17D-4T	Nylon-6 (And) Black 2					
NFBL-10D-2R	Nylon-6 (And) Iron Oxides (CI 77499)(And) Triethoxycaprylylsilane (And) Silica	2mm	10 Denier	Short fiber; Round cross section	Black	Synthetic
New NFBL-10D-2T				Short fiber; Triangular cross section		
NFBL-10D-4R				Short fiber; Round cross section		
NFBR-10D-2R	Nylon-6 (And) Iron Oxides (CI 77499)(And) Iron Oxides (CI 77491) (And) Iron Oxides (CI 77492) (And) Silica	2mm	10 Denier	Short fiber; Round cross section	Brown	Synthetic
NFBR-10D-2T				Short fiber; Triangular cross section		
RFCB-10D-2R	Rayon (And) Silica (And) Black 2	2mm	10 Denier	Short fiber; Round cross section	Black	Synthetic
PP FIBER 6D05	Polypropylene (And) Silica	0.5mm	5.6 Denier	Short Fibers	White	Synthetic
PP FIBER 6D2		2mm				



SEM Image:
RFCB-10D-2R



SEM Image:
NFCB-10D-2T



SEM Image:
SPLASH FIBER II



KMU-023B

Natural Eyebrow Filler

Part 1			
● MICA S-ASG3 - Kobo Products: Mica (And) Stearoyl Glutamic Acid	15.65%	● Polyaldo™ 10-1-0 K FG - Lonza: Polyglyceryl-10 Oleate	1.00%
● ZnO-C-ASG3J - Kobo Products: Zinc Oxide (And) Stearoyl Glutamic Acid	15.65%	● Lexgard® Natural - Inolex Chemical Company: Glyceryl Caprylate (And) Glyceryl Undecylenate	0.40%
● BBO-ASG3 - Kobo Products: Iron Oxides (CI 77499) (And) Stearoyl Glutamic Acid	9.04%	Part 4	
● MSS-500W - Kobo Products: Silica	7.87%	● CELL-U-LASH™ 40 - Kobo Products: Cellulose	1.00%
● BRO-ASG3 - Kobo Products: Iron Oxides (CI 77491) (And) Stearoyl Glutamic Acid	5.50%	Manufacturing Procedure	
● BYO-ASG3 - Kobo Products: Iron Oxides (CI 77492) (And) Stearoyl Glutamic Acid	3.14%	1. Blend Part 1.	
Part 2		2. Heat Part 2 to 80°C under propeller agitation.	
● Protachem™ CTG - Protameen: Caprylic/Capric Triglyceride	18.37%	3. Slowly add Part 1 to Part 2 under prop mixer and start to gradually cool.	
● Cetiol® CC - Cognis Corp.: Dicaprylyl Carbonate	7.60%	4. Slowly add Parts 3 and 4, respectively, to Parts 1 and 2 at 45°C.	
● SunBoost ATB Natural - Kobo Products: Argania Spinosa Kernel Oil (And) Tocopheryl Acetate (And) Bisabolol	4.75%	Description	
● COSMOL™ 43V - Ikeda: Polyglyceryl-2 Triisostearate	3.63%	This natural eyebrow filler features Kobo's ASG treated fillers and pigments which help to impart color, payoff and adhesion to brows. Kobo's silica microsphere, MSS-500W, provides payoff and glide during application. SunBoost ATB Natural is a proprietary ratio of anti-oxidant, anti-irritant and anti-inflammatory agents that nourishes brows. Kobo's cellulose fiber, CELL-U-LASH™ 40, fills in brows making them appear more even and covers sparse areas. Plandool™-LG1 improves malleability of the wax complex which increases bulk transfer to the brow.	
● Plandool™-LG1 - Nippon/Kobo Products: Phytosteryl/Behenyl/Octyldodecyl Lauroyl Glutamate	1.00%		
● Carnauba Wax SP 63P - Strahl & Pitsch: Copernicia Cerifera (Carnauba) Wax	0.40%		
Part 3			
● Vegelight™ 1214 LC - Grant Industries, Inc.: Coconut Alkanes (And) Coco-Caprylate/Caprates	5.00%		

Eye Brow Filler and Shaper



KMU-024A

Brow Wax

Part 1			
● Eutanol® G - BASF: Octyldodecanol	20.00%	Part 4	
● GP-1 - Ajinomoto USA Inc.: Dibutyl Lauroyl Glutamide	4.00%	● OD55YJE - Kobo Products: Iron Oxides (CI 77492) (And) Octyldodecanol (And) Jojoba Esters (And) Trihydroxystearin	0.01%
● EB-21 - Ajinomoto USA Inc.: Dibutyl Ethylhexanoyl Glutamide	3.00%	● OD75BJE - Kobo Products: Iron Oxides (CI 77499) (And) Octyldodecanol (And) Jojoba Esters (And) Trihydroxystearin	0.01%
Part 2		● OD75RJE - Kobo Products: Iron Oxides (CI 77491) (And) Octyldodecanol (And) Jojoba Esters (And) Trihydroxystearin	0.01%
● Panalene® H-300E - Vantage: Hydrogenated Polyisobutene	40.00%	Manufacturing Procedure	
● COSMOL™ 222 - Ikeda: Diisostearyl Malate	17.97%	1. Combine Part 1 and heat to 125°C while prop mixing.	
● Panalene® L-14E - Vantage: Hydrogenated Polyisobutene	7.00%	2. Add Part 2.	
Part 3		3. Add Part 3.	
● Protachem™ CTG - Protameen: Caprylic/Capric Triglyceride	7.00%	4. Add Part 4 and mix until pigment is homogeneous.	
● Germaben® II - Ashland: Propylene Glycol (And) Diazolidinyl Urea (And) Methylparaben (And) Propylparaben	1.00%	5. Pour into tins immediately after.	

Description
This Primer Balm is to be applied to eyebrows prior to KMU-024B (Mag-Attract Brow Filler). The use of Kobo's OD dispersions give this clear balm a slight tint.



KMU-024B

Mag-Attract Brow Filler

Part 1			
● KTZ® EBONY - Kobo Products: Iron Oxides (CI 77499) (And) Mica	38.50%	Manufacturing Procedure	
● KTZ® MISTERIOSO COPPER - Kobo Products: Mica (And) Iron Oxides (CI 77491) (And) Iron Oxides (CI 77499)	38.50%	1. Combine Part 1 and hand mix until uniform.	
● NFBR-10D-2R - Daito/Kobo Products: Nylon-6 (And) Iron Oxides (CI 77499) (And) Iron Oxides (CI 77491) (And) Iron Oxides (CI 77492) (And) Silica	23.00%	2. Place magnet in eyeshadow tin, and fill powder on top.	
		Description	
		Apply this Magnetic Loose Eyebrow Powder after application of KMU-024A (Eyebrow Primer Balm). This loose mascara uses the combination of KTZ® EBONY and KTZ® MISTERIOSO COPPER to provide the brown shade, as well as to adhere the fiber to the magnetic surface. The fiber, NFBR-10D-2R, fills in the brows and sparse hair to make them look fuller.	



KMA-074A

All-In-One Conventional Mascara

Part 1

- Paraffin Wax 4344 - Strahl & Pitsch: *Paraffin* 7.00%
- Carnauba Wax SP 63P - Strahl & Pitsch:
Copernicia Cerifera (Carnauba) Wax 3.00%
- Dermofat 4919 - Alzo Chemical: *Stearic Acid* 3.00%
- Lipo® GMS-450 - Vantage: *Glyceryl Stearate* 3.00%
- **KOBOGUARD® HRPC** - Kobo Products: *Hydrogenated Polycyclopentadiene (And) Polyethylene (And) Copernicia Cerifera (Carnauba) Wax (And) Tocopherol* 2.00%
- Ganex® V-216 - Ashland: *VP/Hexadecane Copolymer* 1.50%
- Apifil CG - Gattefosse: *PEG-8 Beeswax* 1.00%
- Permethy1® 104A - Presperse: *Polyisobutene* 1.00%

Part 2

- Deionized Water - *Water* 15.00%
- **BLACK NF** - Kobo Products: *Iron Oxides (CI 77499)* 10.00%
- PVP K-30 - Ashland: *Poly(Vinyl Pyrrolidone)* 0.80%
- Lexgard® O - Inolex Chemical Company: *Caprylyl Glycol* 0.20%
- Prisorine™ 3515 - Croda: *Isostearyl Alcohol* 0.10%
- S-6W-6 - Shin Etsu: *Simethicone* 0.05%

Part 3

- Deionized Water - *Water* 29.65%
- Butylene Glycol - Ruger Chemical: *Butylene Glycol* 2.00%
- KAOLIN - Imerys: *Kaolin* 2.00%
- **KoboMica S-25** - Kobo Products: *Mica* 1.50%
- **MSS-500W** - Kobo Products: *Silica* 1.00%
- AMP Ultra® PC 2000 - Angus Chemical Company:
2-Amonoisobutanol 0.50%
- Natrosol® 250 HHR CS - Ashland: *Hydroxyethylcellulose* 0.30%
- Keltrol® CG - CP Kelco: *Xathan Gum* 0.20%
- Trisodium EDTA - Spectrum Chemical: *Trisodium EDTA* 0.10%

Part 4

- **DAITOSOL 5000AD** - Daito/Kobo Products:
Acrylates Copolymer (And) Water 14.00%
- **HEART FIBER 15T-1MM** - Nikko/Kobo Products: *Nylon-6 (And) Silica* 0.15%
- **SPLASH FIBER II 7T-2MM** - Nikko/Kobo Products:
Nylon-6 (And) Iron Oxides (CI 77499) (And) Silica 0.15%

Part 5

- Euxyl® PE 9010 - Schulke & Mayr:
Phenoxyethanol (And) Ethylhexylglycerin 0.80%

Manufacturing Procedure

Oil Phase:

1. Combine Part 1 in side beaker. Heat to 85-90°C with slow agitation with spatula.

Grind Phase:

2. Add water to beaker. Prop mix & heat to 60°C.
3. Add PVP, followed by Isostearic Alcohol, Caprylyl Glycol, & Simethicone.
4. Sprinkle Black NF into the vortex. Mix until pigment is wet out.
5. Transfer to homogenizer for 30 minutes.

Water Phase: (main beaker)

6. Record tare weight of main beaker & sweep.
7. Add water to the main beaker. Begin heating to 60°C with prop mixing.
8. Add Trisodium EDTA.
9. Pre-mix Butylene Glycol, Natrosol, & Xanthan Gum.
10. Add grind phase.
11. Heat to 85°C.
12. Add AMP Ultra to batch. Then sprinkle in MSS-500W, Kaolin, & KoboMica S-25.
13. Add Oil phase into water phase, maintain mixing & temperature around 85°C for 15 mins.
14. Begin to air cool.
15. Change to sweep when the bulk becomes thicker.
16. Pre-mix film former with fibers and add to batch at 45°C.
17. Add Euxyl PE 9010.
18. Mix together for 5 minutes & QS missing weight with H2O.
29. Cool & mix until bulk reaches 28°C.

Description

This all-in-one conventional mascara features both **HEART FIBER 15T-1MM** and **SPLASH FIBER II 7T-2MM**. The combination of the heart and black star shape fibers gives the lashes both length and volume. **KOBOGUARD® HRPC** provides a water-resistant film and allows the mascara to be buildable upon application. **DAITOSOL 5000AD** also contributes to water-resistant properties. **BLACK NF** provides deep black color to the mascara. The combination of KoboMica S-25 and MSS-500W provides thickness and body while contributing to volume on the lashes.