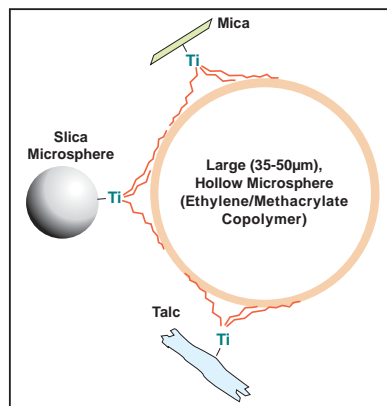


# Microsphere Complexes

**Microsphere Complexes:** Kobo's patented technology covalently bonds Isopropyl Titanium Triisostearate to various substrates such as Platelets, Spheres and Pigments. The resulting complex offers the **best balance of properties possible**, including:

- lightweight, powdery afterfeel
- soft focus effect
- high oil absorption
- pearlescent effect



*Patent #US 5356617  
Pigment-material-microsphere complexes  
and their production*

Trade Name	INCI Name	Size (µm)	Oil Abs (g/100g)	Density (g/in <sup>3</sup> )
DSPCS-I2	Silica (And) Ethylene/Methacrylate Copolymer (And) Isopropyl Titanium Triisostearate	23	280	1.0
DSPCS/20N-I2	Silica (And) Ethylene/Methacrylate Copolymer (And) Isopropyl Titanium Triisostearate	32	550	0.7
DSPCS/3H-I2	Silica (And) Ethylene/Methacrylate Copolymer (And) Isopropyl Titanium Triisostearate	30	375	0.7
DSPCS/3N-I2	Silica (And) Ethylene/Methacrylate Copolymer (And) Isopropyl Titanium Triisostearate	20	470	0.6
DSPCS/H-I2	Silica (And) Ethylene/Methacrylate Copolymer (And) Isopropyl Titanium Triisostearate	23	800	0.4
DSPCS/N-I2	Silica (And) Ethylene/Methacrylate Copolymer (And) Isopropyl Titanium Triisostearate	28	350	0.8
SPCAT-I2	Talc (And) Ethylene/Methacrylate Copolymer (And) Isopropyl Titanium Triisostearate	20	193	1.0
SPCM-I2	Mica (And) Ethylene/Methacrylate Copolymer (And) Isopropyl Titanium Triisostearate	28	185	1.4
SPC/MST-547-I2	Polymethylsilsesquioxane (And) Ethylene/Methacrylate Copolymer (And) Isopropyl Titanium Triisostearate	27	255	0.4
SPC/KTZ CLASSIC WHITE-I2	Mica (And) Titanium Dioxide (And) Ethylene/Methacrylate Copolymer (And) Isopropyl Titanium Triisostearate	25	268	1.2
SPC/KTZ COPPER-I2	Mica (And) Iron Oxides (C.I. 77491) (And) Ethylene/Methacrylate Copolymer (And) Isopropyl Titanium Triisostearate	22	214	1.2
SPC/KTZ GOLD LAME-I2	Mica (And) Titanium Dioxide (And) Iron Oxides (C.I. 77491) (And) Ethylene/Methacrylate Copolymer (And) Isopropyl Titanium Triisostearate	22	260	1.2
SPC/KTZ INTERVAL BLUE-I2	Mica (And) Titanium Dioxide (And) Ethylene/Methacrylate Copolymer (And) Isopropyl Titanium Triisostearate	27	260	1.4
SPC/KTZ INTERVAL GOLD-I2	Mica (And) Titanium Dioxide (And) Ethylene/Methacrylate Copolymer (And) Isopropyl Titanium Triisostearate	24	232	1.2
SPC/KTZ INTERVAL RED-I2	Mica (And) Titanium Dioxide (And) Ethylene/Methacrylate Copolymer (And) Isopropyl Titanium Triisostearate	24	205	1.3
SPC/KTZ INTERVAL GREEN-I2	Mica (And) Titanium Dioxide (And) Ethylene/Methacrylate Copolymer (And) Isopropyl Titanium Triisostearate	24	243	1.3
SPC/KTZ ROUSSILLON-I2	Mica (And) Iron Oxides (C.I. 77491) (And) Ethylene/Methacrylate Copolymer (And) Isopropyl Titanium Triisostearate	23	230	1.2
SPC/KTZ SUNBURST GOLD-I2	Mica (And) Titanium Dioxide (And) Iron Oxides (C.I. 77491) (And) Ethylene/Methacrylate Copolymer (And) Isopropyl Titanium Triisostearate	53	260	1.0

