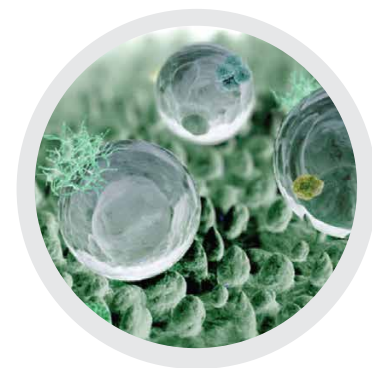


# Rubcouleur KL501-CL & KL501(2M)-CL



## Acrylate-Silicone Resin Microspheres

RUBCOULEUR KL-501-CL and KL501(2M)-CL are two microspheres composed of acrylates and acrylates-silicone polymers, which present a microtextured surface. This textured surface creates a biomimetic “Lotus Effect” which, along with the chemistry, gives them

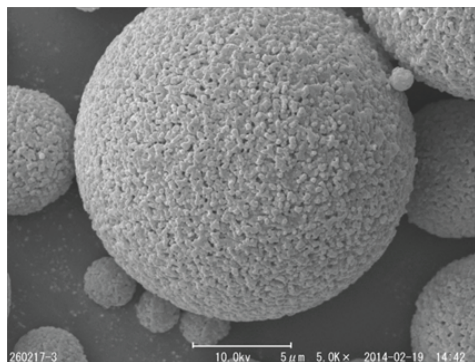
strong water repellency. They also have a high Refractive Index, are expected to give a good soft focus effect and impart a soft and smooth feel to formulas. They are available in two sizes, 8 µm for optimum soft focus and feel, and 2 µm as a texturizing agent.

*The “Lotus Effect” refers to the ultrahydrophobicity and water repellency of the lotus leaves, due to the microtextured nature of their surface: water adhesion and therefore wetting is minimized because of this structure.*

Trade Name	INCI Name	Particle Size (µm)	Oil Absorbency (g/100g)	Bulk Density (g/in <sup>3</sup> )	Refractive Index
RUBCOULEUR KL501-CL	<i>Lauryl Methacrylate/Glycol Dimethacrylate Crosspolymer (And) Acrylates/Ethylhexyl</i>	8	60	4.2	1.49
RUBCOULEUR KL501(2M)-CL	<i>Acrylate/Dimethicone Methacrylate Copolymer</i>	2	66	4.1	1.49

### Recommended Uses:

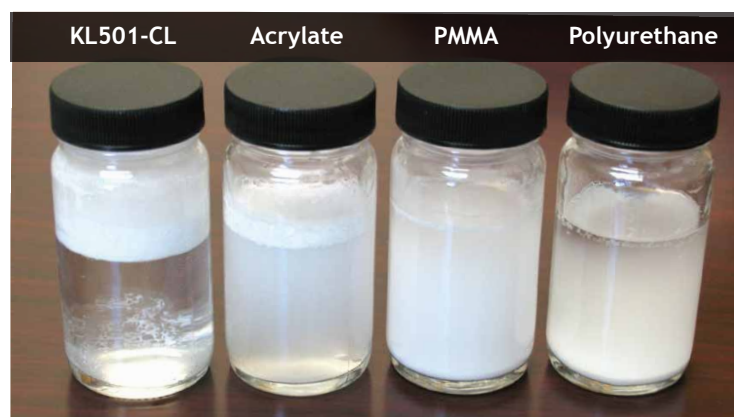
- Emulsions, Gels, Hot Pours, Powders



SEM picture of RUBCOULEUR KL501-CL

### Water Repellency:

in the shake test below, RUBCOULEUR KL501-CL shows higher water repellency than other common microspheres.



*About a gram of each microsphere is added on the surface of DI water in a jar. Jars were shaken 10 times and allowed to stand for one hour before the picture was taken.*

**KOBO**

Technical Literature ref RUBCOULEUR-002 - August 2, 2018

USA - New Jersey  
+1 (908) 757-0033

FRANCE - Labege  
+33 (0)5-62-88-77-40

BRASIL - São Paulo  
+55 (11) 5062-0634

[www.koboproducts.com](http://www.koboproducts.com)



KPP-112

## Luxury Pressed Powder with RUBCOULEUR KL501-CL

### Part 1

● CARESS® BN06 - Bent Tree/Kobo Products: <i>Boron Nitride</i>	36.75%
● TALC N-FS - Kobo Products: <i>Talc (And) Perfluorooctyl Triethoxysilane</i>	33.00%
● RUBCOULEUR KL501-CL - Dainichiseika/Kobo Products: <i>Lauryl Methacrylate/Glycol Dimethacrylate Crosspolymer (And) Acrylates/Ethylhexyl Acrylate/Dimethicone Methacrylate Copolymer</i>	10.00%
● MSS-500N-FS - Kobo Products: <i>Silica (And) Perfluorooctyl Triethoxysilane</i>	3.00%
● RBTD-M-FS - Kobo Products: <i>Titanium Dioxide (And) Perfluorooctyl Triethoxysilane</i>	3.00%
● BPD-500 - Kobo Products: <i>HDI/Trimethylol Hexyllactone Crosspolymer (And) Silica</i>	2.00%
● ZINC MYRISTATE - Kobo Products: <i>Zinc Myristate</i>	2.00%
● BWYO-FS - Kobo Products: <i>Iron Oxides (CI 77492) (And) Perfluorooctyl Triethoxysilane</i>	0.88%
● BWRO-FS - Kobo Products: <i>Iron Oxides (CI 77491) (And) Perfluorooctyl Triethoxysilane</i>	0.76%
● BWBO-FS - Kobo Products: <i>Iron Oxides (CI 77499) (And) Perfluorooctyl Triethoxysilane</i>	0.36%
● Methyl Paraben NF - International Sourcing: <i>Methylparaben</i>	0.15%
● Propyl Paraben NF - International Sourcing: <i>Propylparaben</i>	0.10%

### Part 2

● Xiameter® PMX-200 Silicone Fluid 350CS - Dow Corning: <i>Dimethicone</i>	2.67%
● Xiameter® PMX-200 Silicone Fluid 50 CS - Dow Corning: <i>Dimethicone</i>	2.67%
● Xiameter® PMX-200 Silicone Fluid 20CS - Dow Corning: <i>Dimethicone</i>	2.66%

### Manufacturing Procedure

1. Combine Part 1 in blender. Blend until color is fully developed.
2. Combine Part 2 and mix well.
3. Add Part 2 to Part 1 and blend well.
4. Press at 700 psi.

### Description

This Pressed Powder features RUBCOULEUR KL501-CL (8µm) which helps with formula pressing properties and a smooth feeling on the skin. In addition, this material provides soft focus properties by diffusing light on its textured surface. CARESS® BN06, Boron Nitride, is used for superior softness and tactility, superb spreadability, excellent adherence, long lasting effect, and good coverage. FS Fluoro Silane Treatment (pigments and fillers) exhibits both water and oil repellency while promoting skin adherence for long wear. MSS-500N-FS, an FS treated silica microsphere and FS treated TALC N-FS impart an elegant slip and creaminess upon application. Microsphere, BPD-500, gives this powder luxurious feel during application and helps to achieve a soft matte finish. ZINC MYRISTATE contributes to great feel, adherence on the skin and acts as part of the formula's dry binder system.



KLP-179A

## Bright Pink Moisture Lip Bar with RUBCOULEUR KL501(2M)-CL

### Part 1

● Protachem™ CTG - Protameen: <i>Caprylic/Capric Triglyceride</i>	39.30%
● INBP50R28U - Kobo Products: <i>Red 28 Lake (And) Isononyl Isononanoate (And) Isopropyl Myristate (And) Stearalkonium Hectorite (And) Isopropyl Titanium Triisostearate (And) Propylene Carbonate (And) Polyhydroxystearic Acid</i>	28.00%

### Part 2

● PM WAX 82 - Toray/Kobo Products; <i>Polyethylene (And) Microcrystalline Wax</i>	14.70%
● Plandool™-H - Nippon/Kobo Products: <i>Phytosteryl/Isostearyl/Cetyl/Stearyl/Behenyl Dimer Dilinoleate</i>	7.00%
● Lexgard® O- Inolex: <i>Caprylyl Glycol</i>	1.00%

### Part 3

● RUBCOULEUR KL501(2M)-CL - Dainichiseika/Kobo Products: <i>Lauryl Methacrylate/Glycol Dimethacrylate Crosspolymer (And) Acrylates/Ethylhexyl Acrylate/Dimethicone Methacrylate Copolymer</i>	10.00%
---	--------

### Manufacturing Procedure

1. Combine all of Part 1 ingredients and prop mix at 80°C until homogeneous.
2. Add Part 2 to batch, maintain 80°C.
3. Add Part 3 to batch, maintain 80°C.
4. Pour into mold at @75°C.

### Description

This lipstick features RUBCOULEUR KL501(2M)-CL, which contributes to an extra-comfortable feeling on the lips and soft touch with buttery cushion. Presence of RUBCOULEUR KL501(2M)-CL in the formula contributes to color payoff and does not interfere with formula shine. PM WAX 82 is a combination of waxes used to structure the formulation. Kobo's INBP50R28U dispersion gives gloss, high color intensity, as well as a creamy feel upon application. INBP Dispersions are available in a wide range of pigments. Plandool™-H is the primary emollient and moisture-protecting agent.

**KOBO***Rubcouleur K1501-CL & K1501(2M)-CL*

www.koboproducts.com