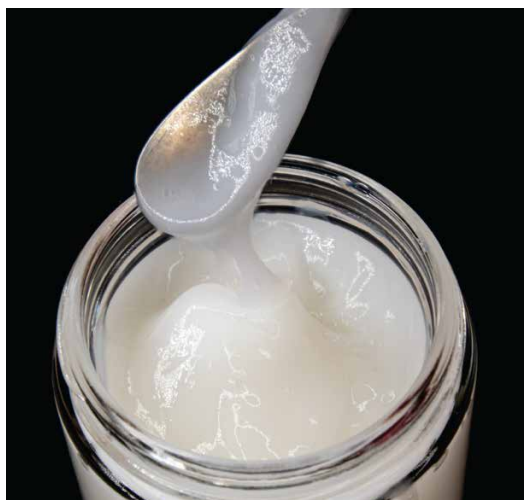


Koboguard® Natural PXF

Naturally Derived Aqueous Film Former with Multi-Functional Properties



KOBOGUARD® NATURAL PXF is a natural, aqueous-based film former, viscosity modifier, and suspension system. It also improves soft focus and application on skin. The product is created by combining two distinct

polysaccharide technologies - food grade gums and micro fibrillated cellulose. A synergistic stable mixture and suspending network is formed by the three polysaccharides present.

Product Benefits

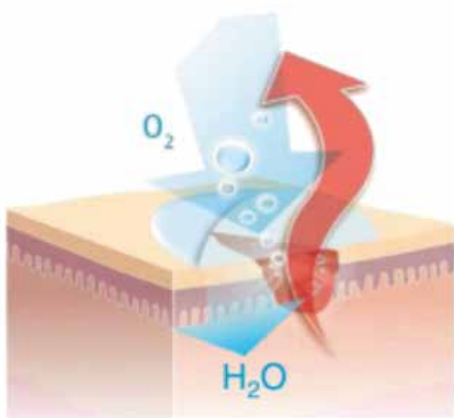
- Naturally derived ingredients (from pine, tapioca, corn, soy, wheat)
- Bonding and coating properties
- Viscosity modifier; shear thinning upon application
- Physically reduces wrinkles; increases soft focus effect
- Provides immediate and effective lifting
- Improves luxuriant feel by providing lubricity
- Adds a degree of soft focus via micro fibrillated cellulose
- High degree of breathability - light feeling
- Cellulose fibrils are suspended in water, they interconnect through hydrogen bonding and mechanical entanglement to form an extensive 3D network, which can stabilize suspended particles
- Electrolyte tolerance; stabilizes oils and esters

Aqueous-based Film Former

KOBOGUARD® NATURAL PXF

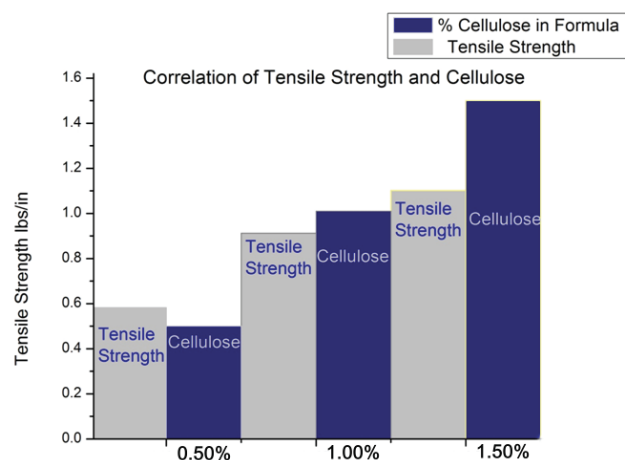
INCI Name: Water (And) Pullulan (And) Glycerin (And) Cellulose (And) Xanthan Gum (And) Methylglucamine

Breathable Type Film



Best for skin care, foundation make-up, spa products, and sun care

Tensile Strength



KOBOGUARD® NATURAL PXF variations

KOBO

USA
New Jersey

BRASIL
São Paulo

UK
Abingdon

FRANCE
Labege

ASIA PACIFIC
Tokyo

Applications

Applications	Benefits	Recommended Use Levels
Skin Care Products	Adds rich texture and increases viscosity Enhances smoothness when applied Cushion release texture	Rich toner 1 - 10%
		Thick cream 10 - 50%
		Rich serum 5 - 20%
		Extensible lotion 10 - 20%
		Face mask 25 - 70%
Hair Care Products	Adds rich texture Enhances smoothness and lubricity when applied Better adherence of actives to hair	Shampoo with less dripping 5 - 30%
		Retain the active ingredients in hair treatments 5 - 30%
		Silky hair and improve lubricity 5 - 30%
		Better setting for hair cream & lotions 5 - 50%
Color Cosmetic Products	Improved adhesiveness of pigment and powder products Longer lasting makeup due to film-forming properties Better adherence of actives to skin Enhance attachment of lash or brow fibers	Mascara with lash fibers 10 - 30%
		Brow products 10 - 30%
		Foundation make-up, eye shadow, blushers 5 - 20%
Sun Care Products	Longer lasting sunscreen due to film-forming properties Better adherence of sunscreen organic actives to skin Improved adhesiveness of titanium dioxide and zinc oxide to skin	Aqueous soothing sun stick 10 - 50%
		Aqueous sun spray 5 - 20%
		Sunscreen cream 10 - 30%
		Sunscreen lotion 3 - 15%



KMA-102-BR

Clean Lash Lengthening Mascara

Part 1

- **KOBOGUARD® NATURAL 2063-NDA** - Kobo Products: *Glyceryl Hydrogenated Rosinate (And) C9-12 Alkane* 15.00%
- **Cera de Candelila** - Cosmotec: *Candelilla (Euphorbia Cerifera) Wax* 6.00%
- **MONTANOV™ 202** - Seppic: *Arachidyl Alcohol (and) Behenyl Alcohol (and) Arachidyl Glucoside* 5.00%
- **Cera de Carnauba** - Fênix Ceras: *Carnauba Wax* 4.00%
- **Cetiol® Ultimate** - BASF: *Undecane (and) Tridecane* 4.00%
- **Estearato EMULSIONÁVEL "GMS SE"** (Cera de Coco) - Engenharia das Essências: *Glyceryl Stearate* 2.00%
- **COSMOL™ 182V** - Ikeda/ Kobo Products: *Sorbitan Sesquiossearate* 1.20%
- **Lexgard® Natural MB** - Cosmotec: *Glyceryl Caprylate (and) Glyceryl Undecylenate* 1.00%

Part 2

- **Deionized Water** - Water 35.60%
- **Glicerina Bi-Destilada U.S.P.** - Synth: *Glycerin* 2.00%
- **SOLAGUM™ AX** - Seppic: *Acacia Senegal Gum (And) Xanthan Gum* 1.00%
- **SOLAGUM™ TARA** - SEPPIC: *Caesalpinia Spinosa Gum* 0.20%

Part 3

- **CELL-U-LASH™ 150** - Kobo Products: *Cellulose* 1.00%
- **CELL-U-LASH™ 40** - Kobo Products: *Cellulose* 1.00%
- **MSS-500/N** - Kobo Products: *Silica* 1.00%

Part 4

- **KOBOGUARD® NATURAL PXF** - Kobo Products: *Water (Aqua) (And) Pullulan (Pullulan) (And) Glycerin (And) Cellulose (And) Xanthan Gum (And) Methylglucamine* 10.00%
- **W25CB** - Kobo Products: *Water (And) Black 2 (And) Sodium Lignosulfonate* 10.00%

Manufacturing Procedure

1. Combine phase 1 and heat until 80°C.
2. Mix phase 2 and heat until 80°C .
3. Add phase 2 to phase 1 while mixing.
4. Cool until 45°C and add phase 3.
5. Add phase 4 and mix until homogeneous

Description

This mascara has mostly natural origin ingredients that, when combined, adhere perfectly to the lashes, creating a multidimensional texture that lengthens and adds volume. It features CELL-U-LASH™ 150 and CELL-U-LASH™ 40 fibers, made of cellulose, a natural polymer, to lengthen lashes and visually improve the curling angle. MSS-500N, a silica microsphere, provides volume and adherence to the lashes. Two film formers, KOBOGUARD® NATURAL 2063-NDA (oil phase) and KOBOGUARD® NATURAL PXF (water phase) are combined to add long wear and prevention from smudging, racoon eyes and flaking. Carbon black dispersion W25CB provides the deep black color and is easy to add into the formula and COSMOL™ 182V contributes to formula stability.

KOBO

Koboguard® Natural PXF

www.koboproducts.com